

5000-401

THIS INSTRUMENT PREPARED BY
DAVID P. LINDLEY
OF
CAULFIELD and WHEELER, INC.
SURVEYORS - ENGINEERS - PLANNERS
7900 GLADES ROAD, SUITE 100
BOCA RATON, FLORIDA 33434 - (561)392-1991

REDGRAVE PLAT

BEING A REPLAT OF A PORTION OF TRACT 120 OF THE PLAT OF SUBDIVISION OF S.E. 1/4 AND W. 1/2 OF S.W. 1/4 OF SEC. 16, TOWNSHIP 46S, RANGE 42E,
ACCORDING TO THE PLAT THEREOF, AS RECORDED IN PLAT BOOK 1, AT PAGE 158 OF THE PUBLIC RECORDS OF PALM BEACH COUNTY, FLORIDA

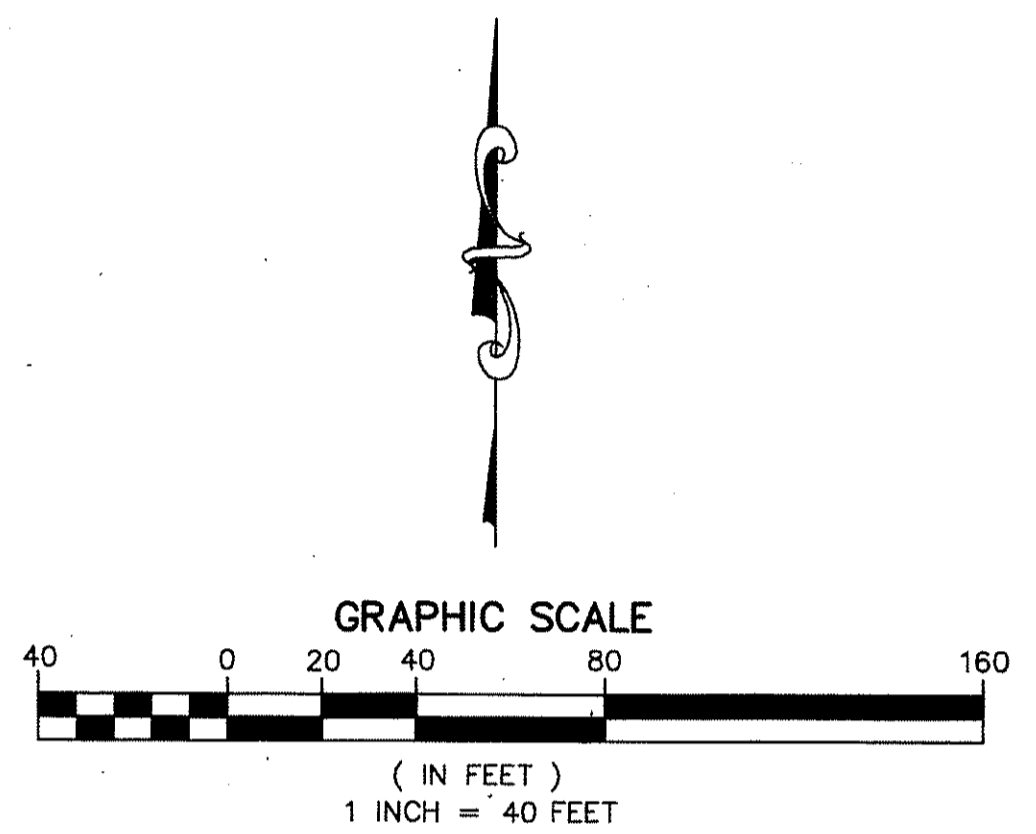
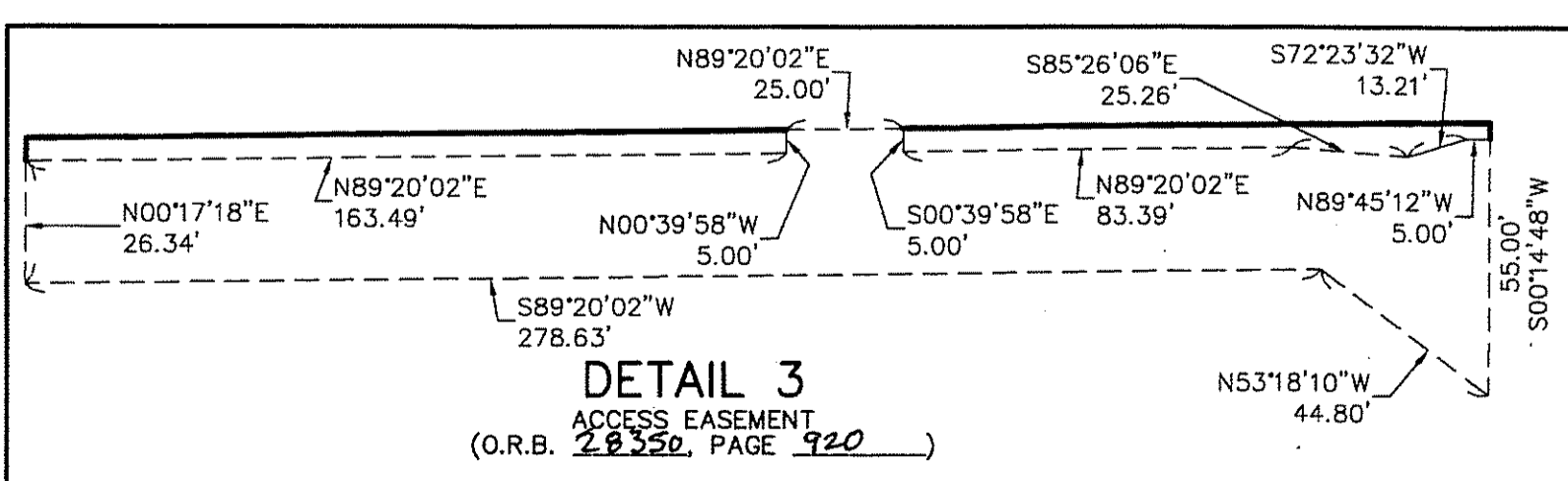
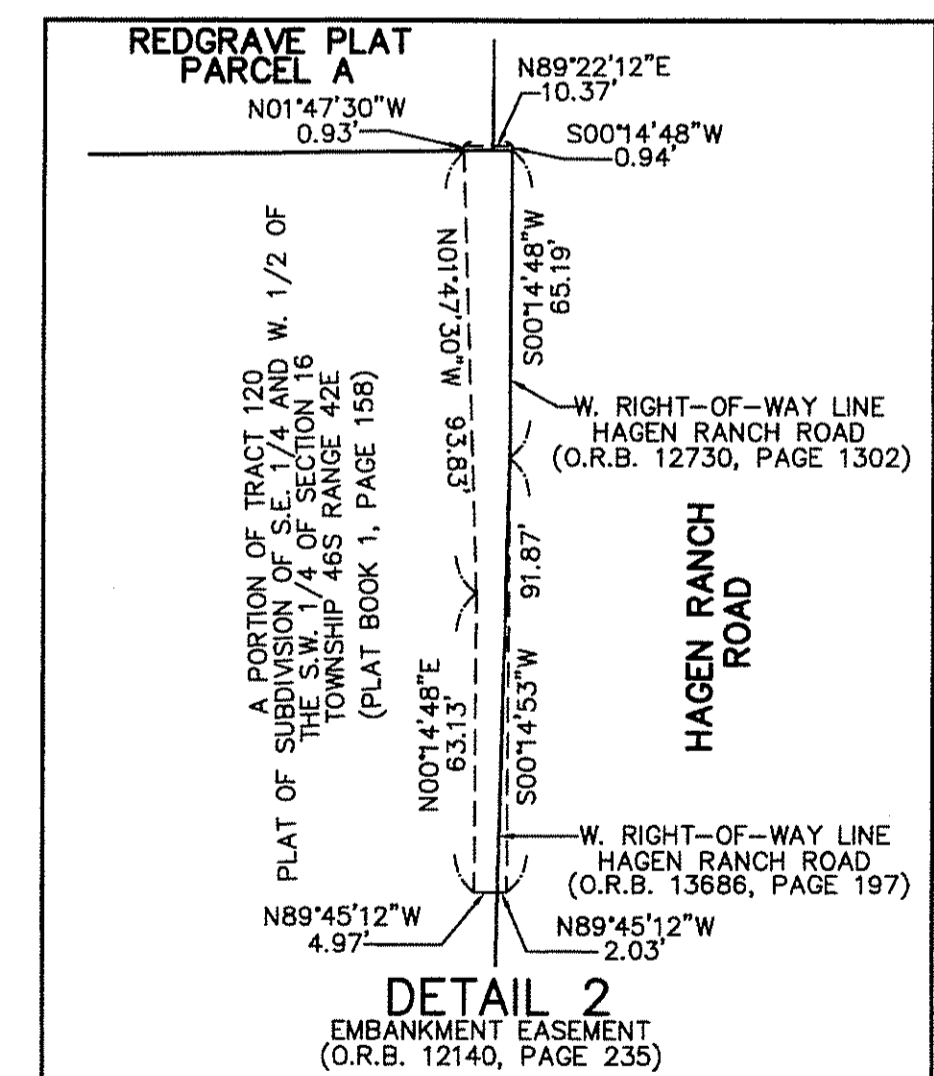
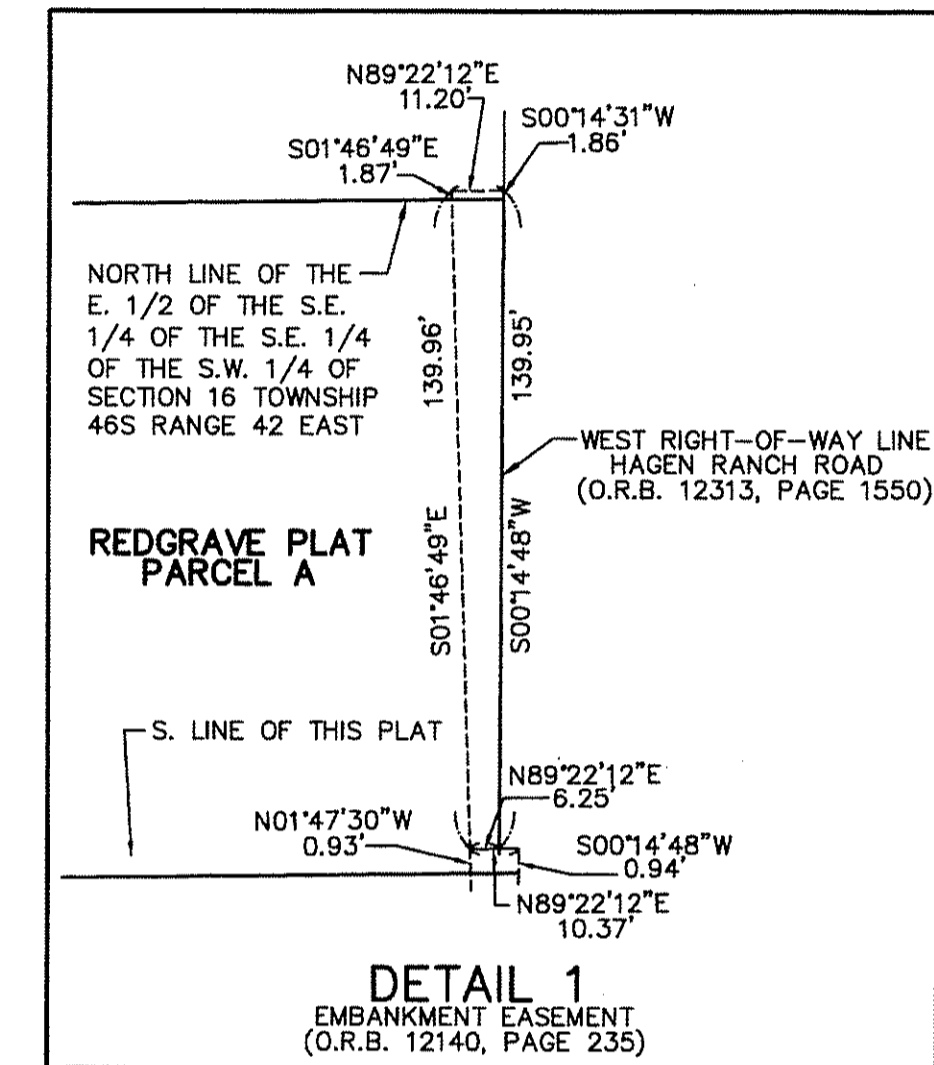
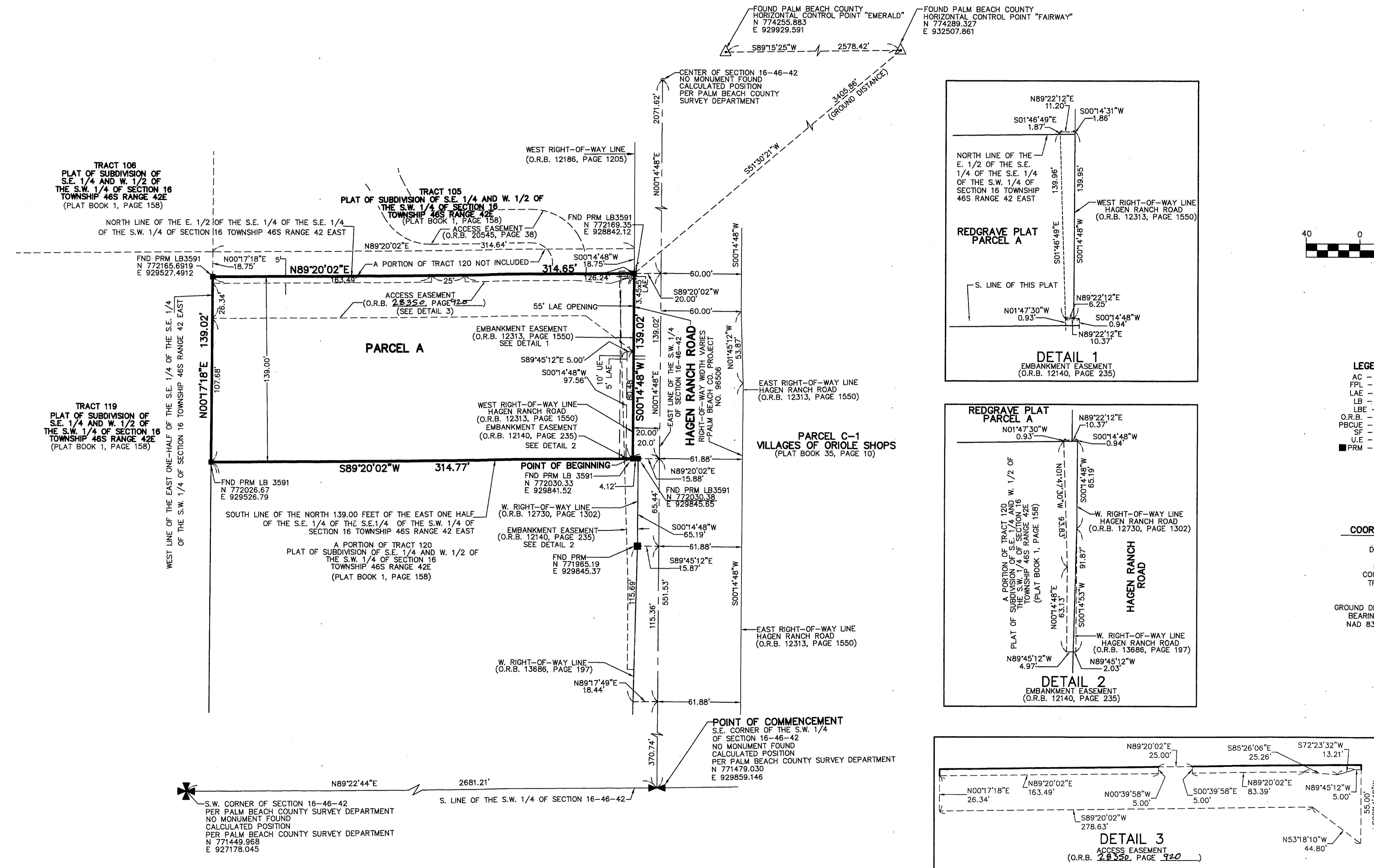
157

STATE OF FLORIDA
COUNTY OF PALM BEACH
THIS PLAT WAS FILED FOR
RECORD AT _____ M.
THIS _____ DAY OF _____
A.D. 20____ AND DULY RECORDED
IN PLAT BOOK _____ ON
PAGES _____ AND _____

SHARON R. BOCK
CLERK AND COMPTROLLER

BY: _____
DEPUTY CLERK

SHEET 2 OF 2



- LEGEND/ABBREVIATIONS**
- AC - ACRES
 - FPL - FLORIDA POWER & LIGHT CO.
 - LAE - LIMITED ACCESS EASEMENT
 - LB - LICENSED BUSINESS
 - LBE - LANDSCAPE BUFFER EASEMENT
 - O.R.B. - OFFICIAL RECORD BOOK
 - PBCUE - PALM BEACH COUNTY UTILITY EASEMENT
 - SF - SQUARE FEET
 - U.E. - UTILITY EASEMENT
 - PRM - DENOTES FOUND PERMANENT REFERENCE MONUMENT
4" x 4" x 24" CONCRETE MONUMENT STAMPED LB3591

- NOTES**
COORDINATES, BEARINGS AND DISTANCES
- COORDINATES SHOWN ARE GRID
 - DATUM = NAD 83 1990 ADJUSTMENT
 - ZONE = FLORIDA EAST
 - LINEAR UNIT = U.S. SURVEY FEET
 - COORDINATE SYSTEM 1983 STATE PLANE
 - TRANSVERSE MERCATOR PROJECTION
 - ALL DISTANCES ARE GROUND
 - SCALE FACTOR = 1.00027065
 - GROUND DISTANCE X SCALE FACTOR = GRID DISTANCE
 - BEARINGS AS SHOWN HEREON ARE GRID DATUM,
NAD 83 1990 ADJUSTMENT, FLORIDA EAST ZONE.